



Moscow Social-Pedagogical Institute (MSPI)

Melnikov Dmitry
Alexeyevich
RECTOR

75 Friedrich Engels street, building 3,
Moscow

Melnikov Dmitry Alexeyevich

1 Rector of MSPI

2 Deputy Chairman of the Expert
Council of the Committee on
Science and Higher Education
in The State Duma of the
Russian Federation

3 PhD in Pedagogical Sciences



Moscow Social-Pedagogical Institute

It is among the TOP 5 of best non-governmental universities in Russia

It was founded in 1996

More than 2000 specialists have been trained

FACULTY OF CORRECTIONAL PEDAGOGY AND SPECIAL PSYCHOLOGY

PROFILES

Bachelor's degree

- Special psychology
- Speech therapy
- Special preschool pedagogy and psychology
- Defectology

PROFILES

Master's degree

- Habilitation of young children
- Oligophrenopedagogics
- Speech therapy (organization of speech therapy work in educational, health and social institutions)

Professional retraining

1

SPEECH THERAPY
(with internship)

2

NEURODEFECTOLOGY
(with internship)

Advanced training

1

Speech therapy
massage

2

Preparing for school of
preschool children age
(including children with
special educational
needs) to study in school
with the implementation
of the State Educational
Standarts

3

Correction sound -
producing aspects of
speech in children of
preschool age

FACULTY OF PUBLIC AND MUNICIPAL ADMINISTRATION

PROFILES

Bachelor's degree

- Regional administration and local self-government
- Public service and personnel policy

PROFILES

Master's degree

- Psychology of personnel management

FACULTY OF PEDAGOGY AND PSYCHOLOGY

PROFILES

Bachelor's degree

- Primary education
- Pre-school education
- Foreign language
- Psychology and social pedagogy

PROFILES

Master's degree

- Management in education
- Pedagogy of preschool childhood
- Pedagogy and methodology of primary education
- Theory and practice of teaching of the Russian language as a foreign one

Professional retraining

1

Management in
education

2

Primary
education

3

Pre-school
education

4

Foreign language

5

Psychology and
pedagogy of
inclusive
education

FACULTY OF PRACTICAL PSYCHOLOGY

PROFILES

Bachelor's degree

- Practical psychology
- Psychology of management in the state and municipal service

PROFILES

Master's degree

- Counseling Psychology

Professional retraining

1

PRACTICAL
PSYCHOLOGY
(with internship)

2

TRANSMODAL SUBJECTIVE
PSYCHOTHERAPY AND
CONSULTING



MSPI abroad

International activity is one of the most important areas of MSPI work. Based on the strategic development program of the Institute, the main aspects of the international activities of MSPI are:

1. participation in the state policy on the development of the export of educational services of the Russian Federation;
2. implementation of interuniversity cooperation with foreign partner universities;
3. development of academic mobility of students and staff of the Institute;
4. development and implementation of joint educational and scientific programs;
5. organization of meetings and master classes with the participation of foreign teachers and scientists from abroad;
6. participation in the international projects and programs, including Erasmus+



Foreign partner universities

- *THE REPUBLIC OF BELARUS*

Vitebsk State University
named after P.M. Masherov

- *KAZAKHSTAN*

KYZYLORDA STATE UNIVERSITY

Korkyt Ata UNIVERSITY (Korkyt Ata
Kyzylorda State University)

"METROPOLITAN BUSINESS SCHOOL" ("Metropolitan
Business School")

- *TAJIKISTAN*

"CENTER FOR INTERNATIONAL PROGRAMS"
OF THE MINISTRY OF EDUCATION AND SCIENCE
THE REPUBLIC OF TAJIKISTAN

- *CHINA*

YUNNAN UNIVERSITY

etc.

CONSORTIA OF NON-GOVERNMENTAL UNIVERSITIES

«Memory is stronger than
weapons»

Consortium for military-patriotic and
military memorial educational work
among young people.

«New Square»

A consortium of value-oriented
educational organizations.

Student Scientific Society

- 1 Forum “Youth for family values”

- 2 Forum-festival of professional and socially oriented youth projects # Bestproject

- 3 Forum "Youth. Family. Children"

- 4 "International School of Professional Competencies of future teachers and psychologists"



The main directions of educational work are:

1

PATRIOTIC

2

SPIRITUAL AND MORAL

3

SCIENTIFIC AND
EDUCATIONAL

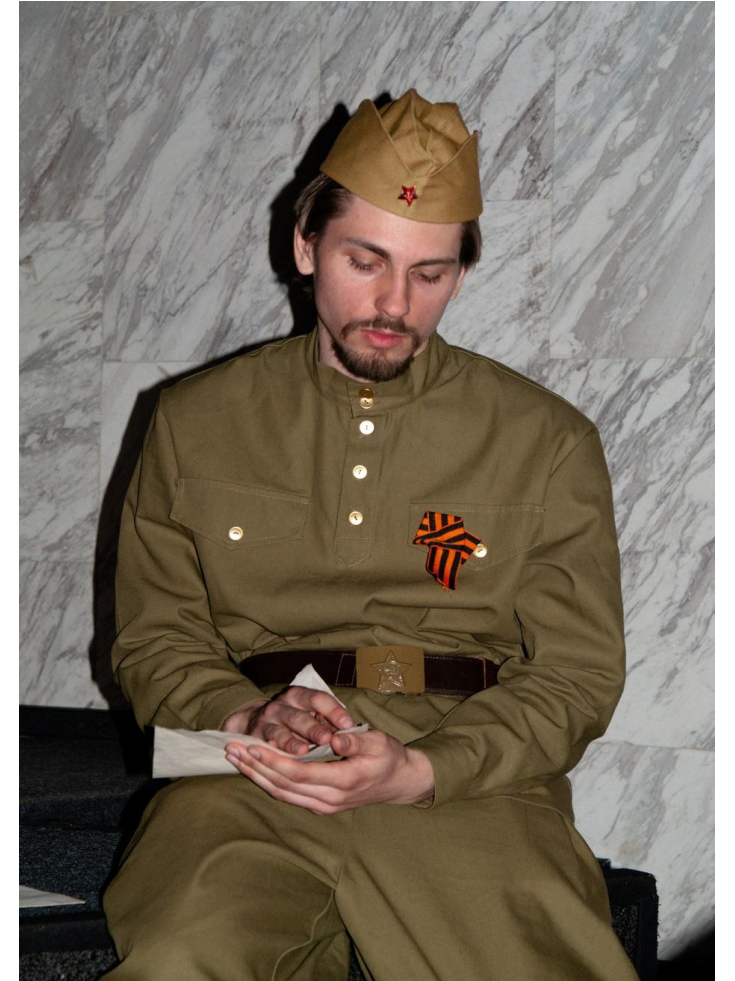
4

PROFESSIONAL
EMPLOYMENT

5

CULTURAL AND
EDUCATIONAL

PATRIOTIC





SPIRITUAL AND MORAL



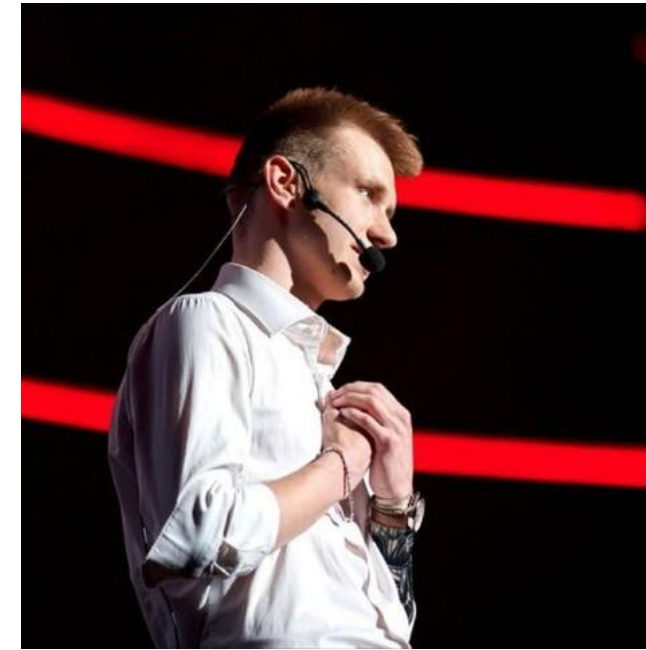
SCIENTIFIC AND EDUCATIONAL



PROFESSIONAL EMPLOYMENT



CULTURAL AND EDUCATIONAL



YOUTH POLICY

“Student Council of MSPI”

The student government organization, which represents the rights, helps solve problems, closes various kinds of student requests, and also organizes the extracurricular life of students through projects and their coverage.

“Volunteer Center MSPI”

This is a socially useful work performed voluntarily without calculation of monetary remuneration. A volunteer is a person who voluntarily provides gratuitous assistance to people in need of special support and social protection.